

Hergebruik, mag het een krasje hebben?

Inspiratiesessie Sustainability – Brainport Industry Campus

Alexander Peters
Process & Quality Engineer
alexander.peters@ips-technology.com



TOOLING
DEVELOPMENT



PACKAGING
DEVELOPMENT



TESTING



CLEANING



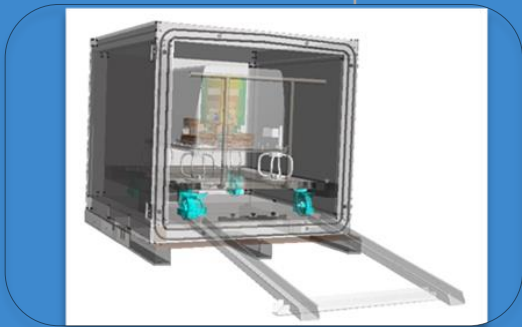
HARDWARE



PACKING



CIRCULATION
POOL



Innovar Cleaning Control

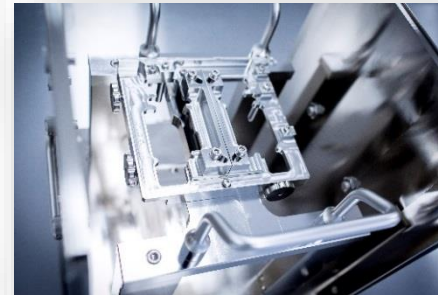
Cleaning

- Wet cleaning (water)
- Dry cleaning (solvent)
- Manual cleaning
- Automatic cleaning
- Bake out



Qualification

- Particle inspection (UVA / ORK / PMC)
- Residual Gas Analysis
- He Leak testing
- Pressure drop test



Assembly

- IPS (TA / Plug / Lock)
- CA's



Push to Servitization and Circularity

- Ecodesign requirements
- Extended producer responsibility
- Waste hierarchy

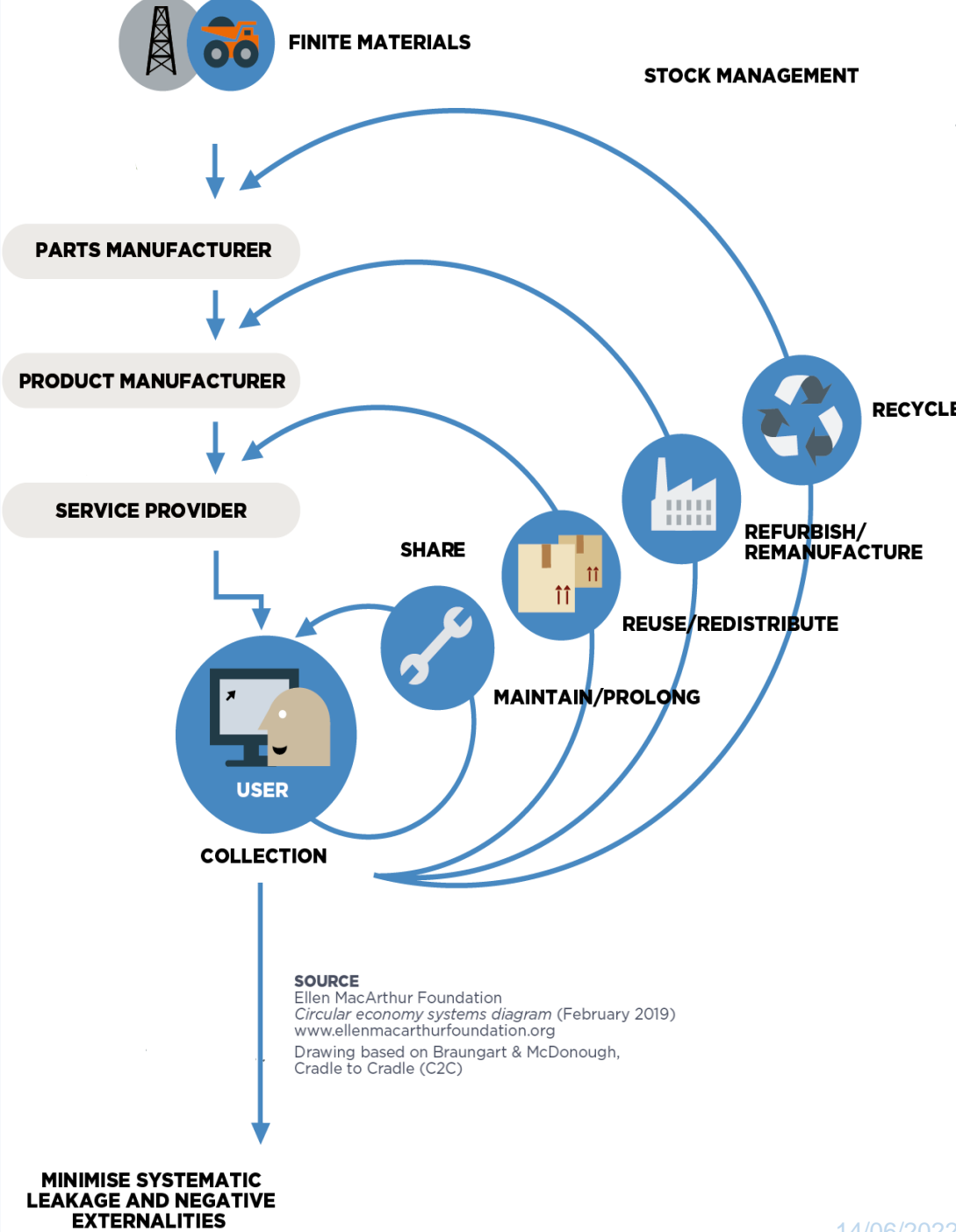


Larger share of service related income in manufacturing industry

- Impacts on supply chain

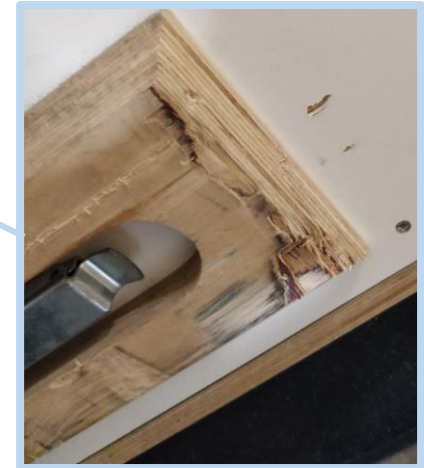
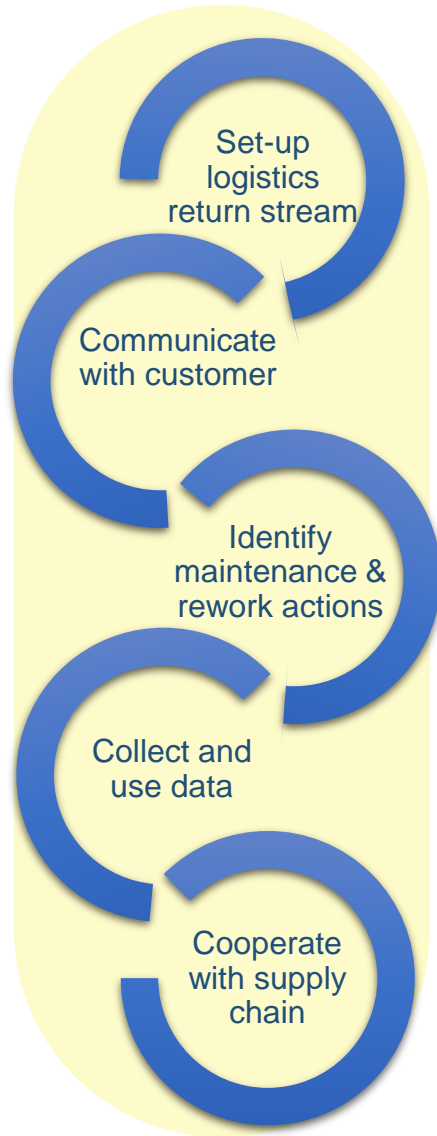
Re-used & refurbished products as a growth mechanism

- Retention of product ownership
- Control / insight into customer use of products

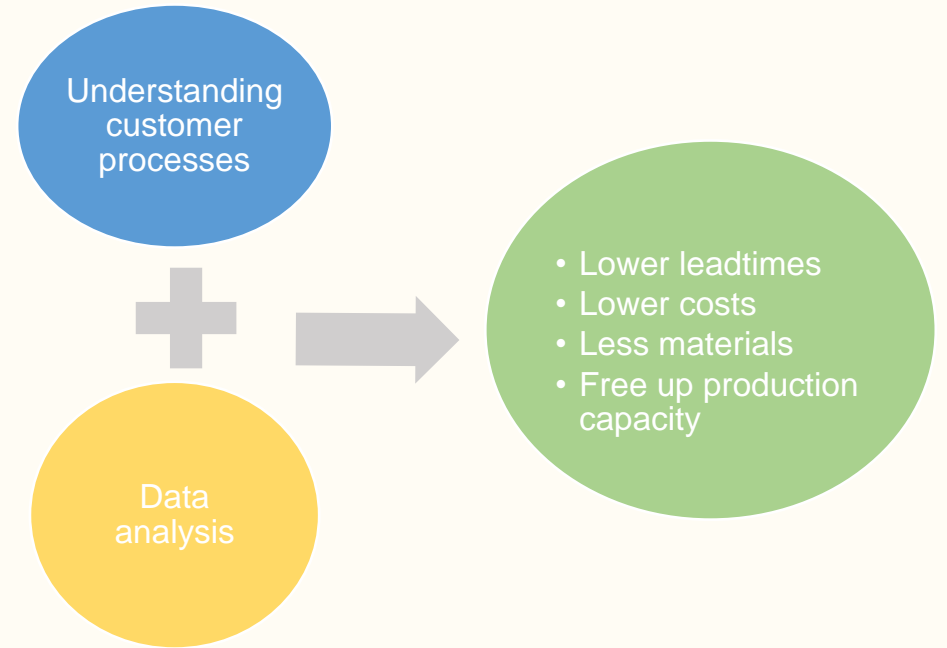
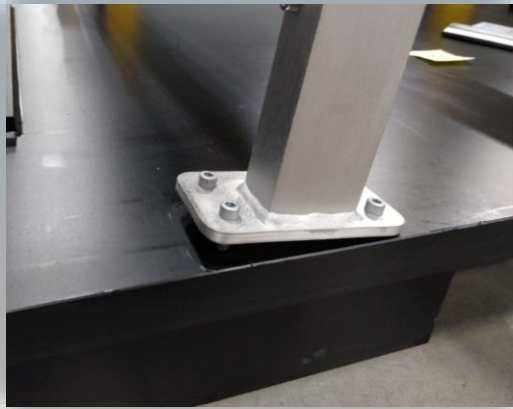


SOURCE
 Ellen MacArthur Foundation
Circular economy systems diagram (February 2019)
www.ellenmacarthurfoundation.org
 Drawing based on Braungart & McDonough,
 Cradle to Cradle (C2C)

Reusing Transport Boxes: Learnings



Reuse Learnings & advantages

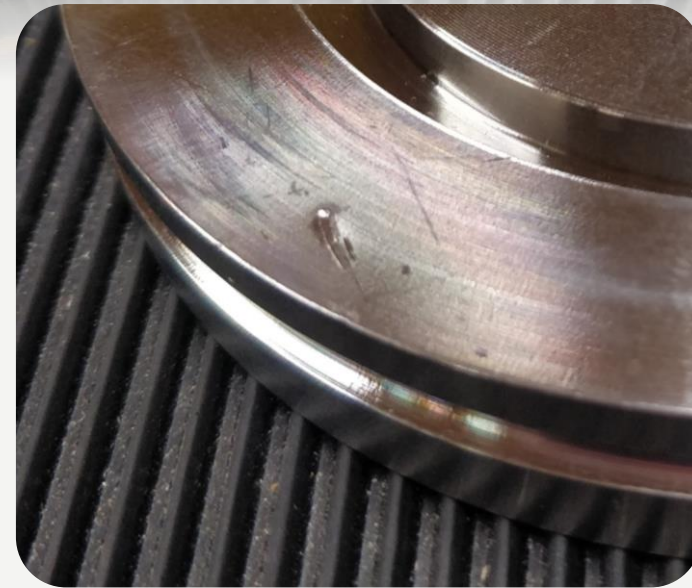
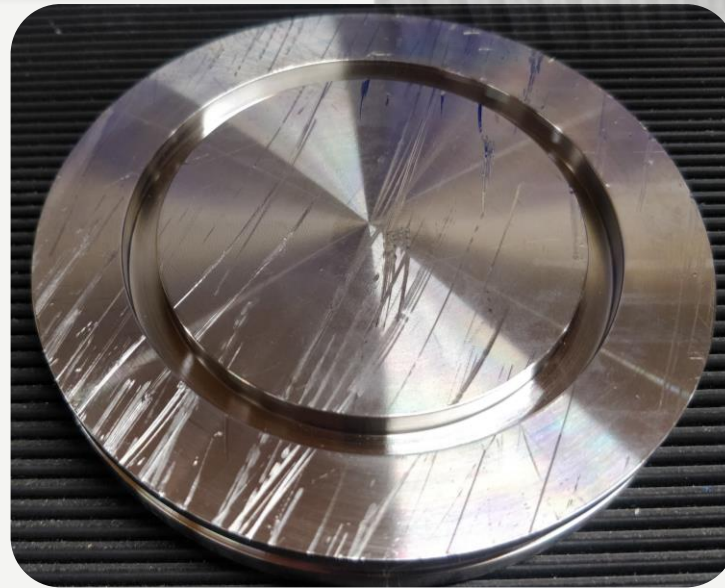
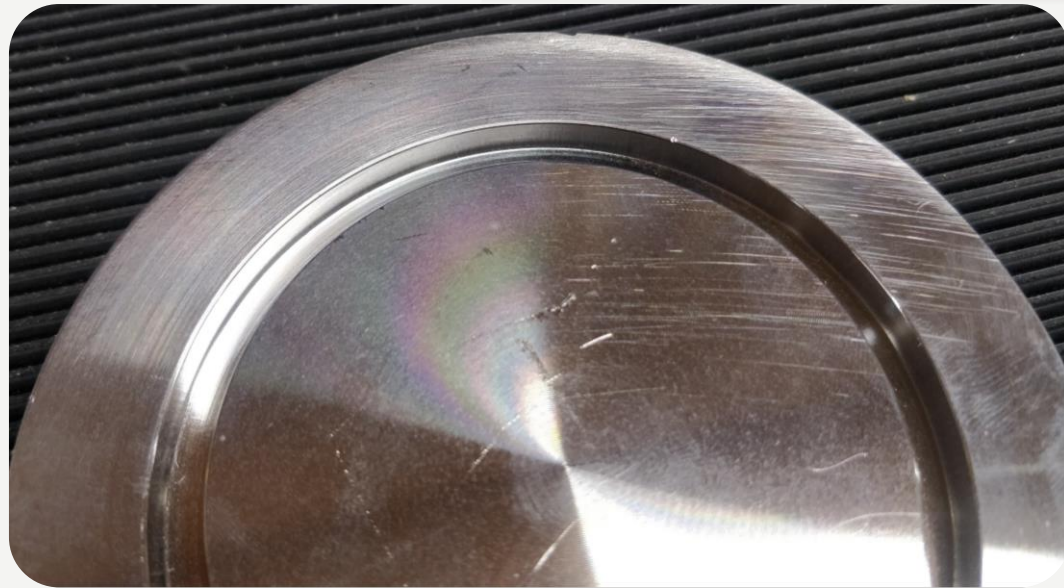
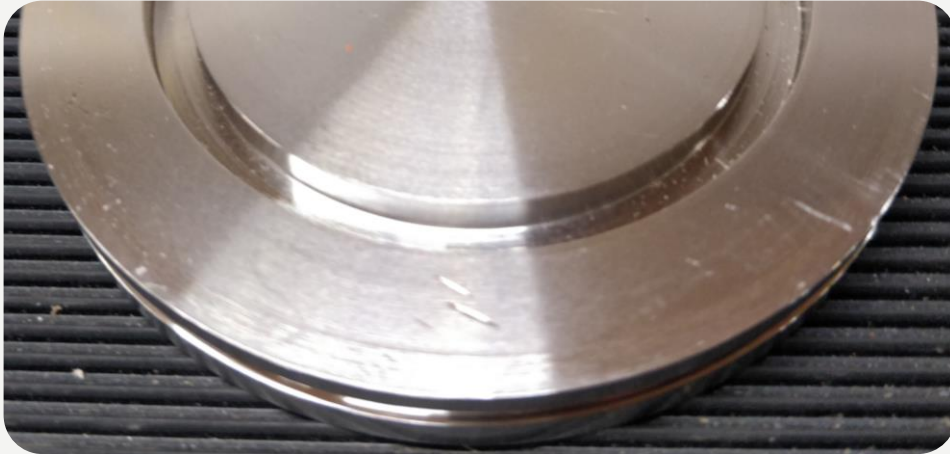


E.g. 1: If a component always breaks → have replacement stock and avoid use in new designs

E.g. 2: If a part often goes missing → discuss with customer how to prevent, or adapt design

Re-use of function-critical parts

Ex. Vacuum flanges



Takeaway: Re-use

